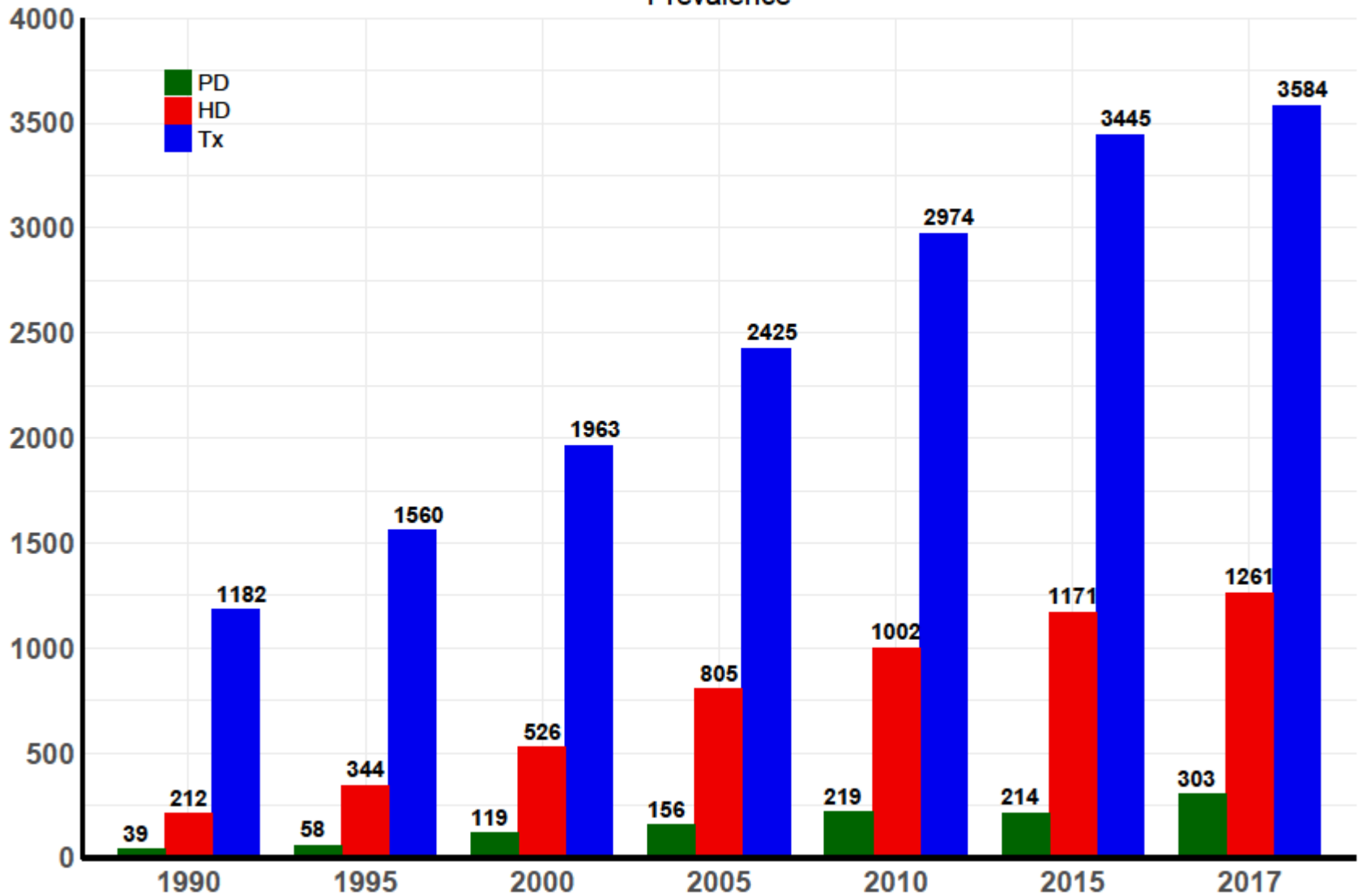
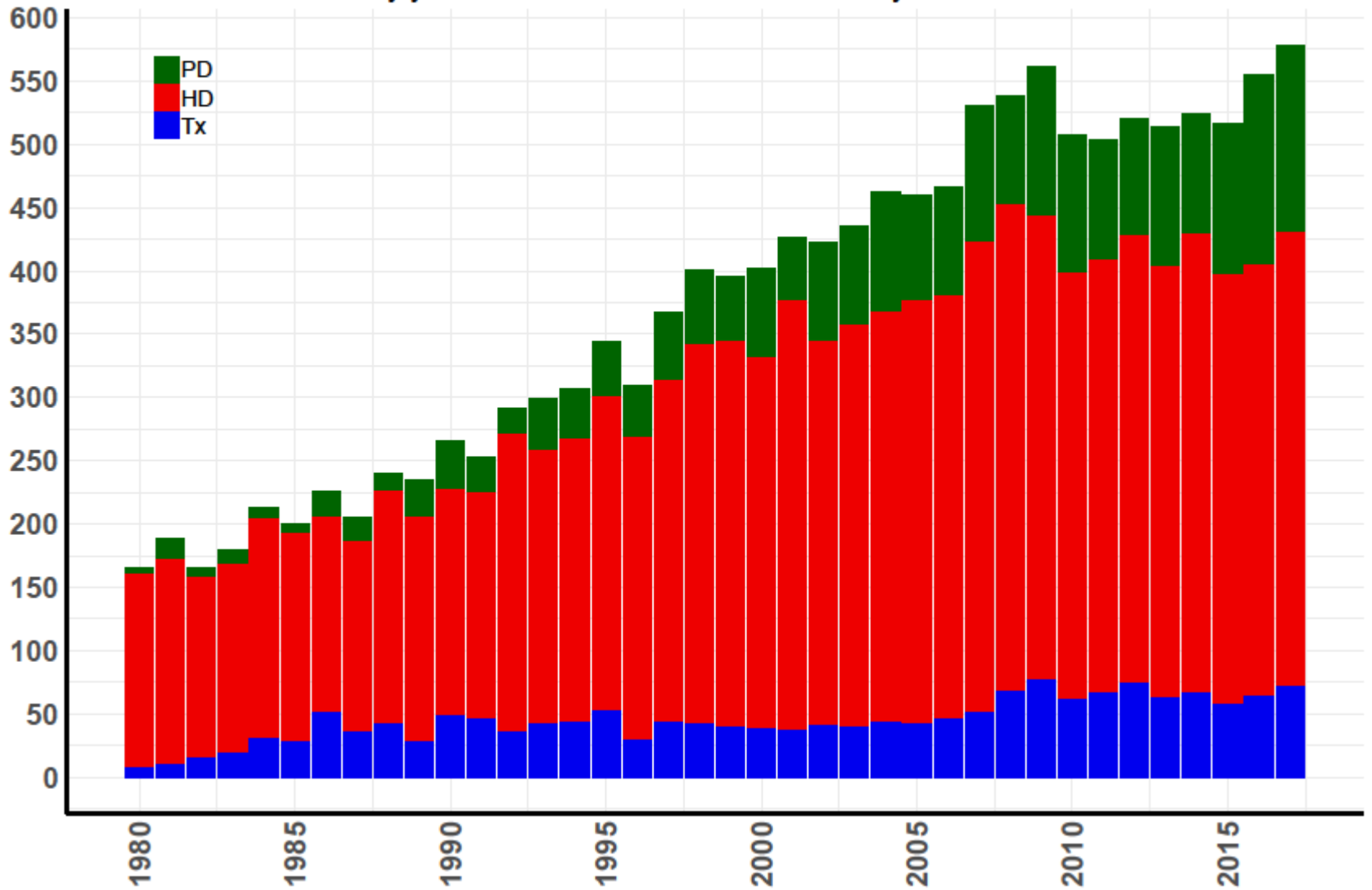


# Renal replacement therapy in Norway

## Prevalence

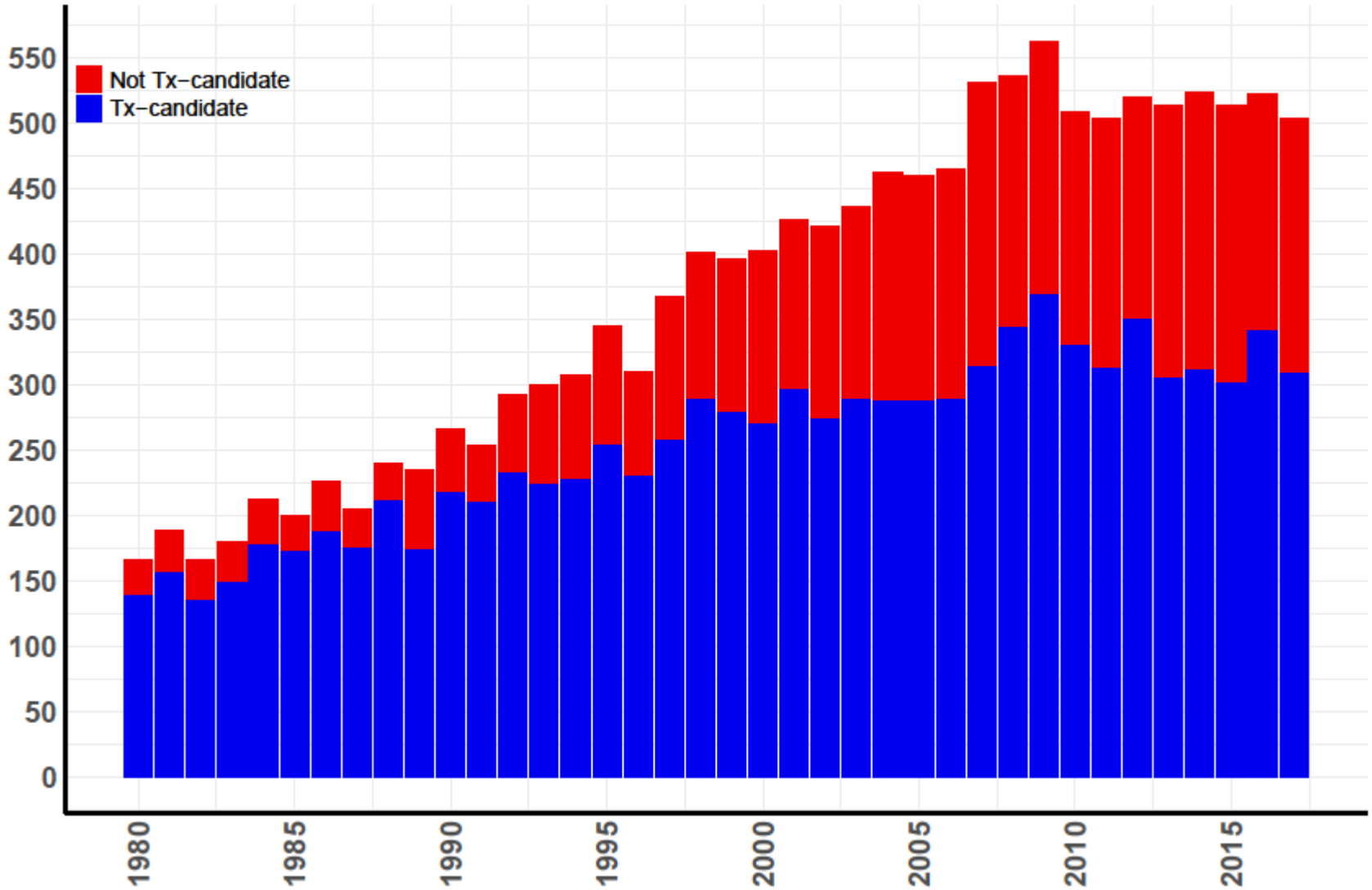


**New patients in RRT**  
By year and first treatment mode, Norway 1980–2017



# New patients in RRT

By year and Tx-candidate status at RRT start, Norway 1980–2017



# Transplantasjoner

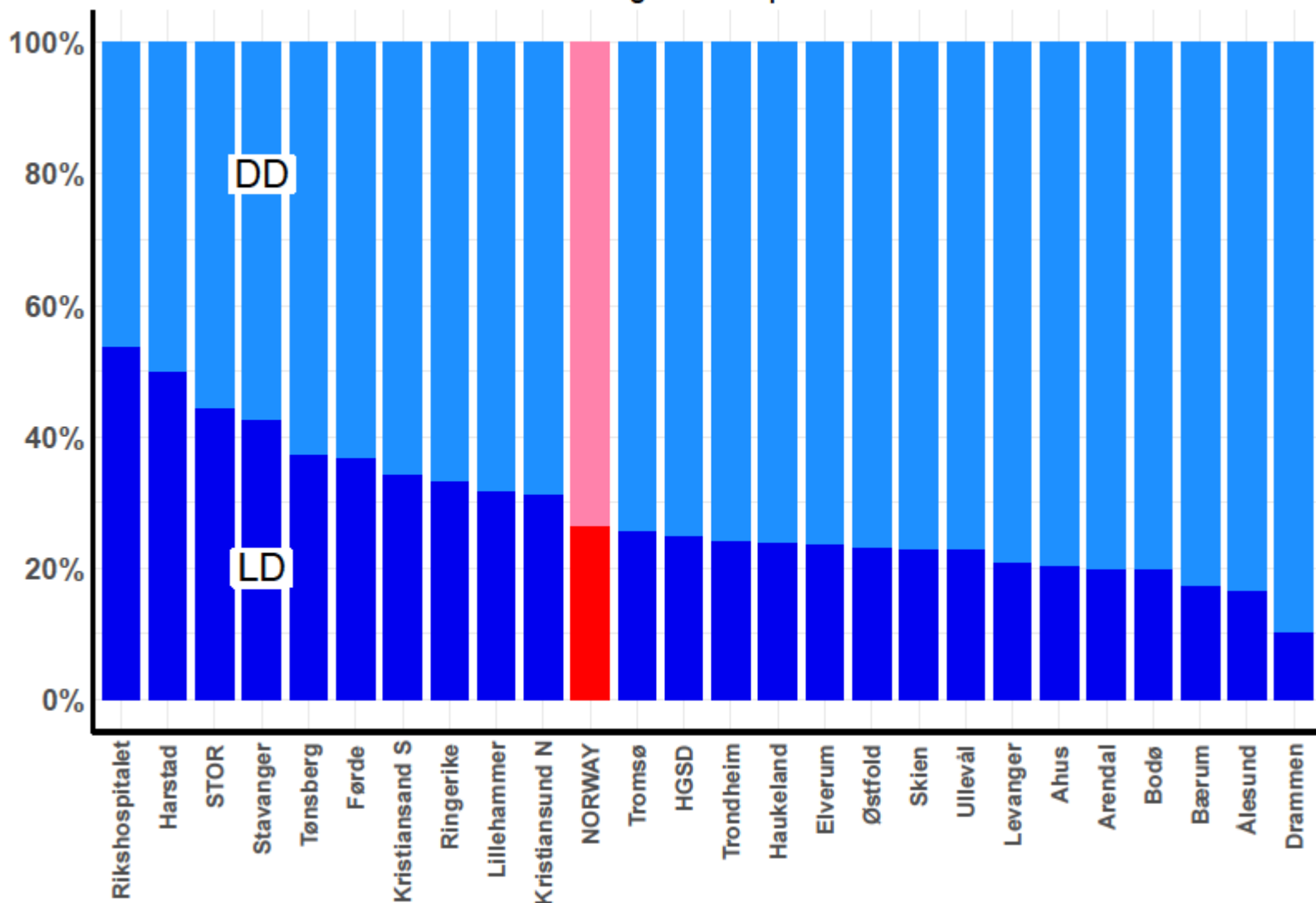
## 1.januar – 31.desember

|             | 2008 | 2009 | 2010 | 2011 | 2012 | 2013 | 2014 | 2015 | 2016 | <b>2017</b> |
|-------------|------|------|------|------|------|------|------|------|------|-------------|
| Nyre DD     | 168  | 172  | 164  | 210  | 201  | 178  | 187  | 179  | 175  | <b>184</b>  |
| Nyre LD     | 98   | 104  | 83   | 73   | 81   | 68   | 68   | 63   | 47   | <b>77</b>   |
| Nyre-Pancr. | 9    | 16   | 14   | 16   | 17   | 19   | 17   | 11   | 16   | <b>11</b>   |
| Pancreas    | 1    | 0    | 1    | 4    | 11   | 20   | 14   | 20   | 4    | <b>13</b>   |
| Øy-celler   | 6    | 5    | 6    | 8    | 8    | 5    | 2    | 5    | 7    | <b>11</b>   |

**Nyrer totalt 2017: 274**

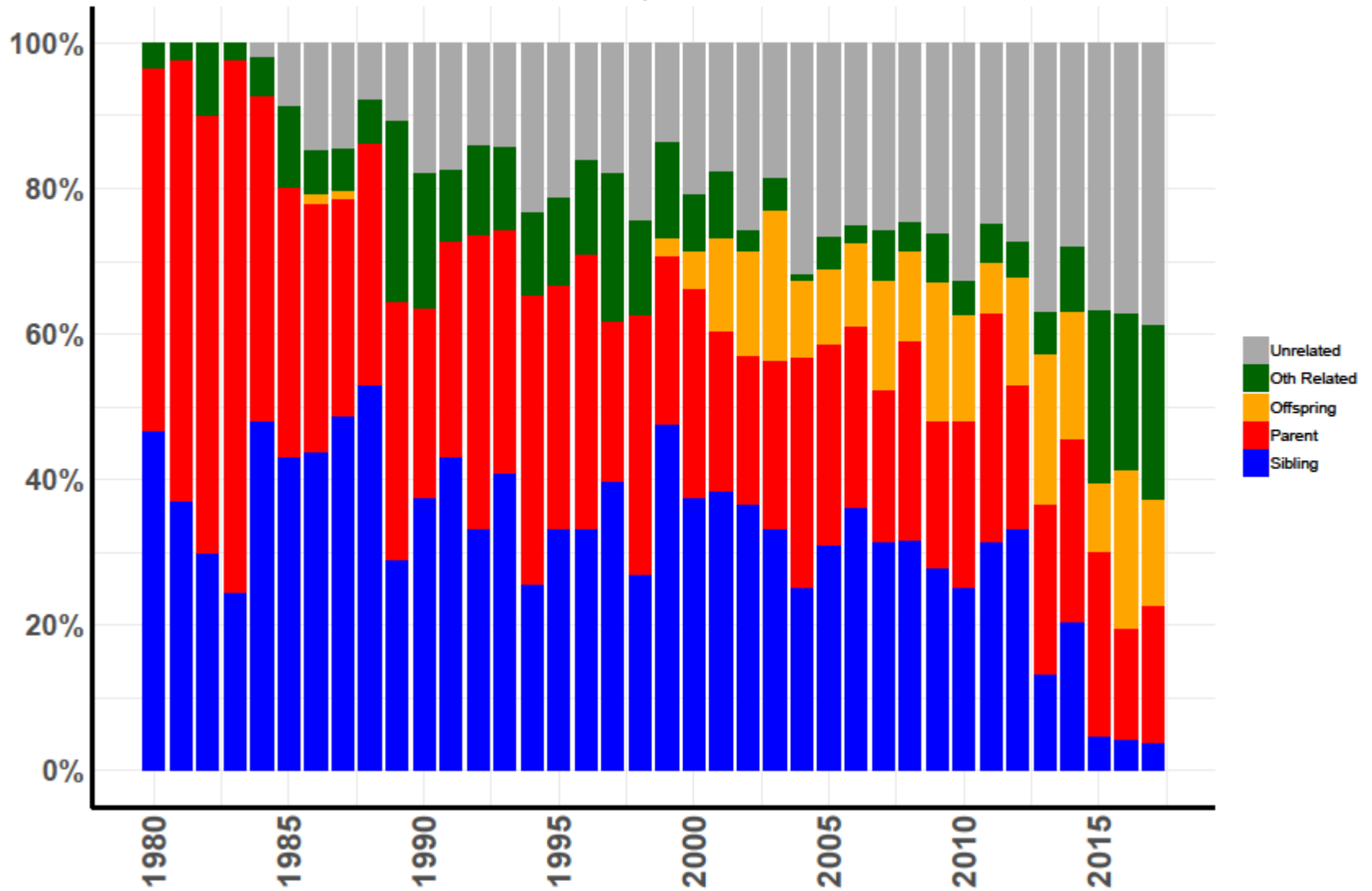
# Kidney (only) transplantations 2013–2017

Percentage LD/DD per center



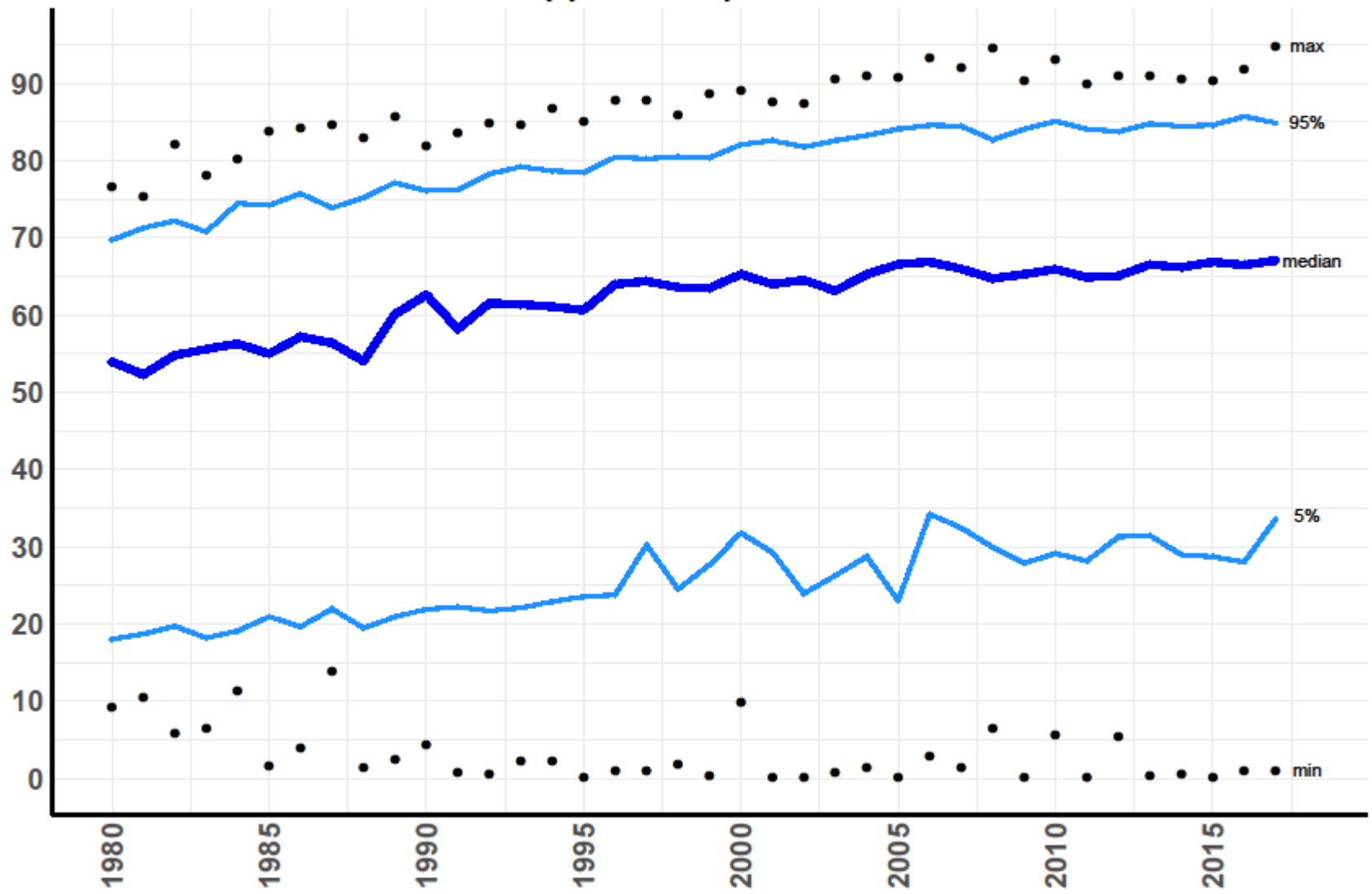
# LD-transplantations 1980-2017

## Donor-recipient relation



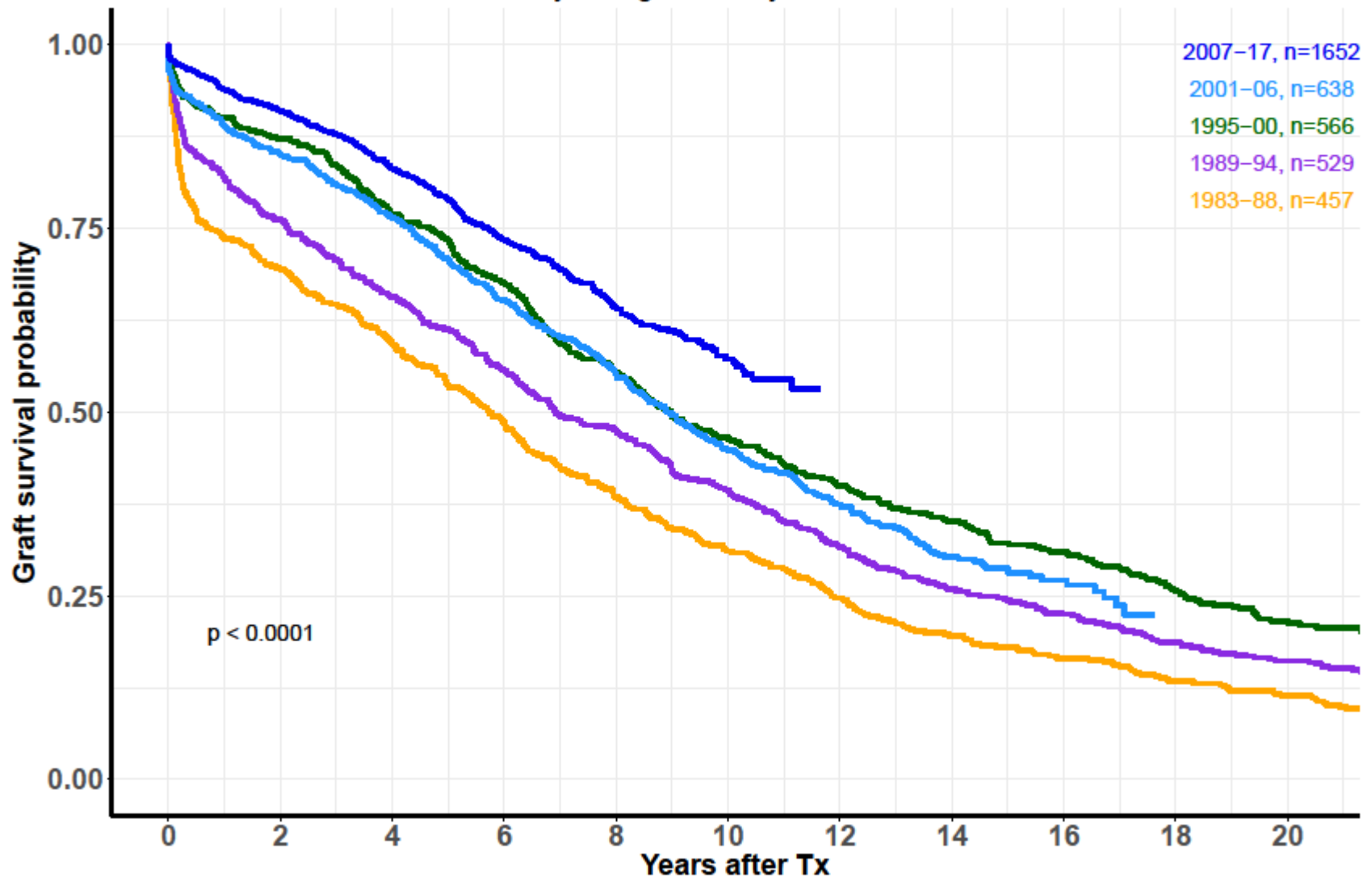
# Age of new patients in RRT

By year, Norway 1980-2017



# Graft survival, first DD kidney (only) transplant

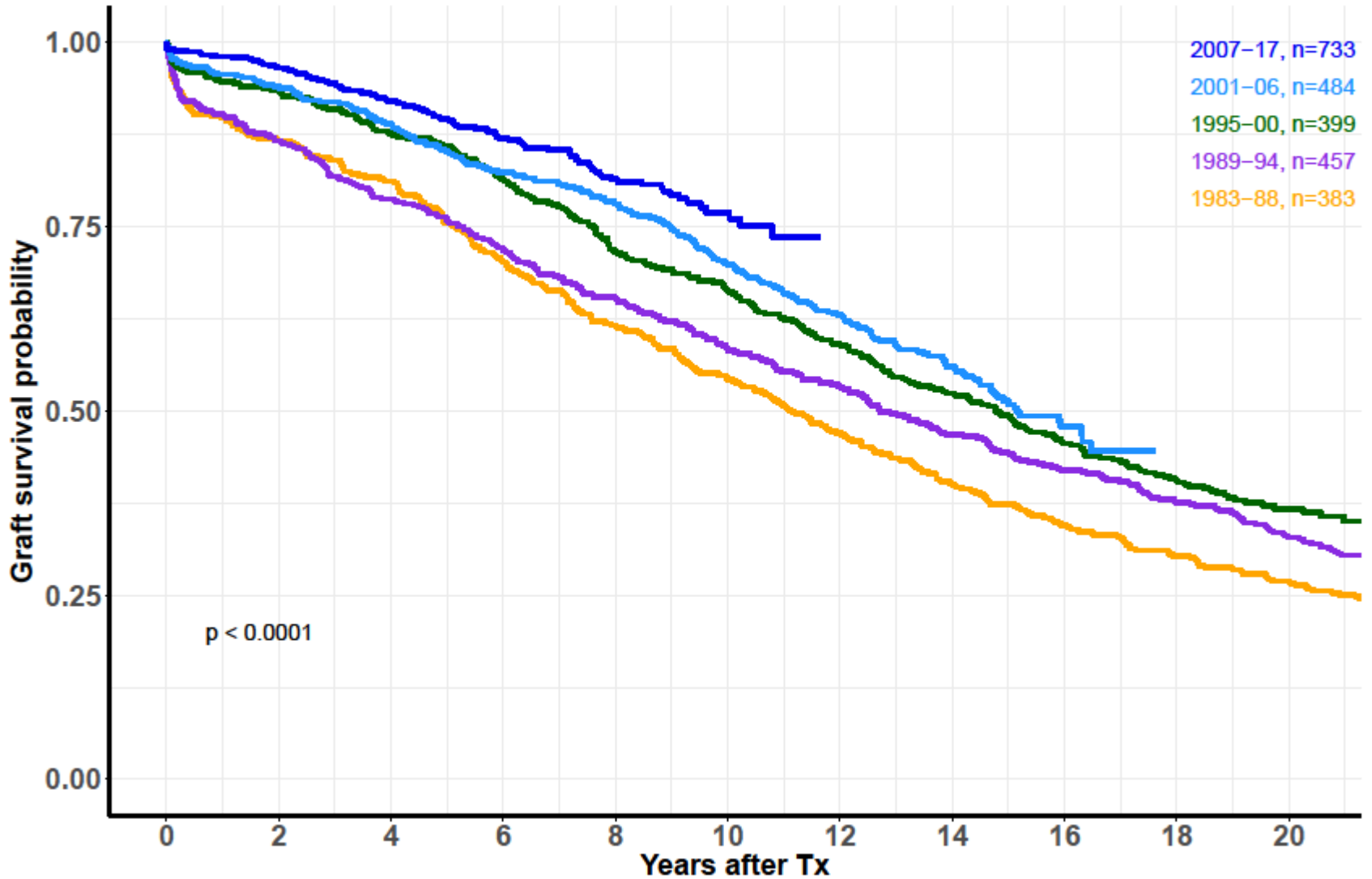
By vintage, Norway 1983–2017





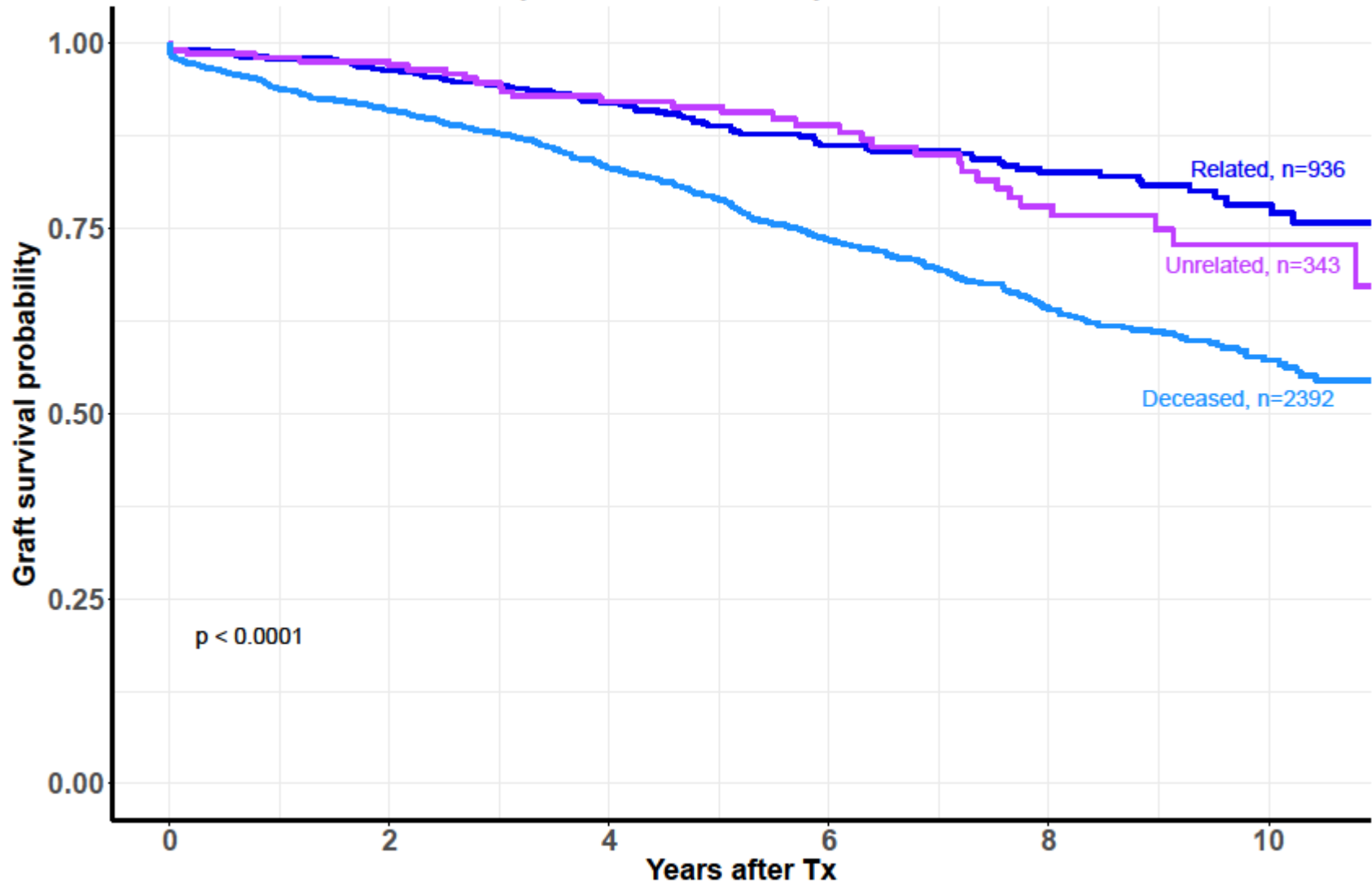
# Graft survival, first LD kidney (only) transplant

By vintage, Norway 1983-2017



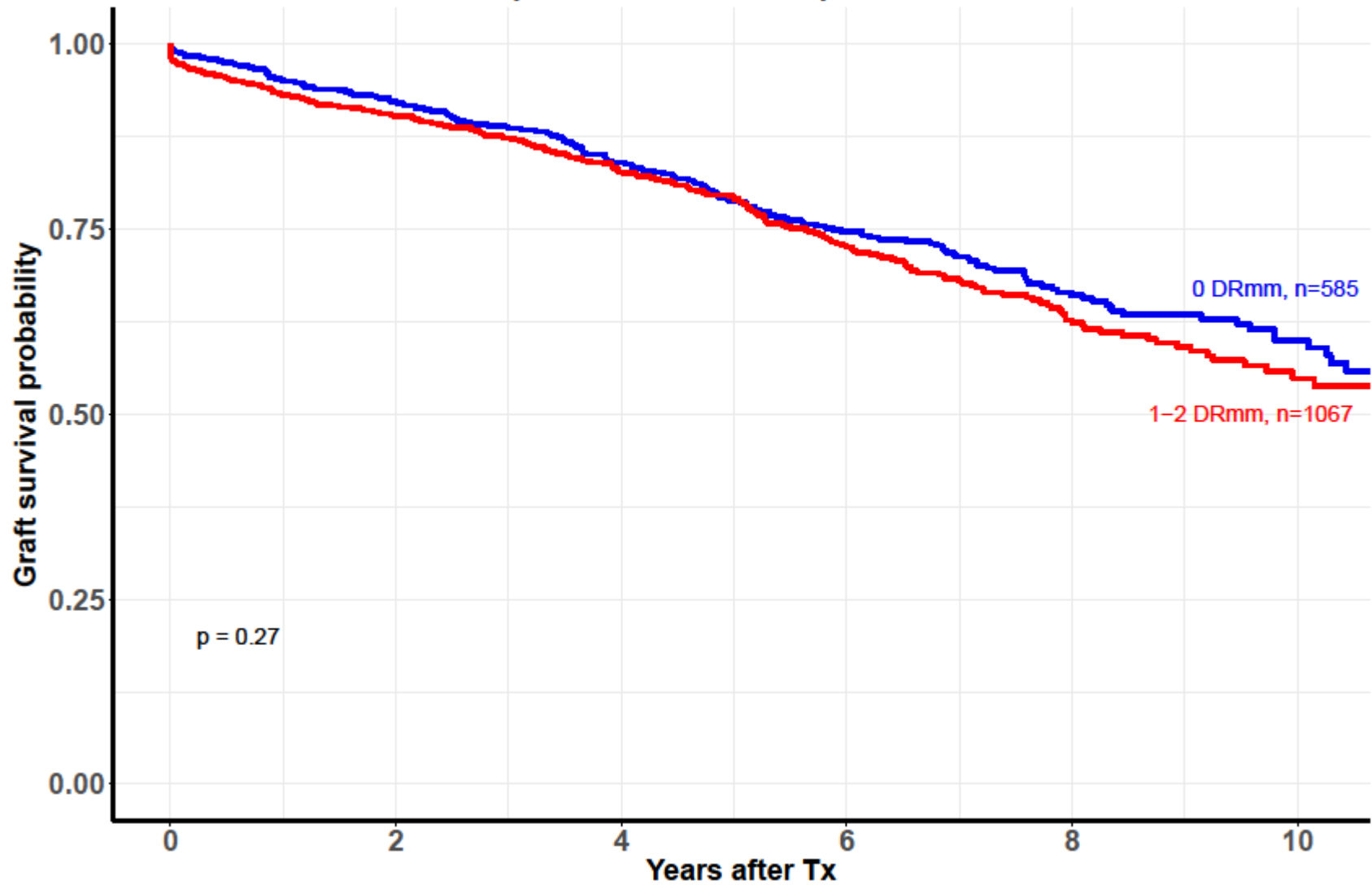
# Graft survival, first kidney (only) transplant

By donor source, Norway 2007–2017



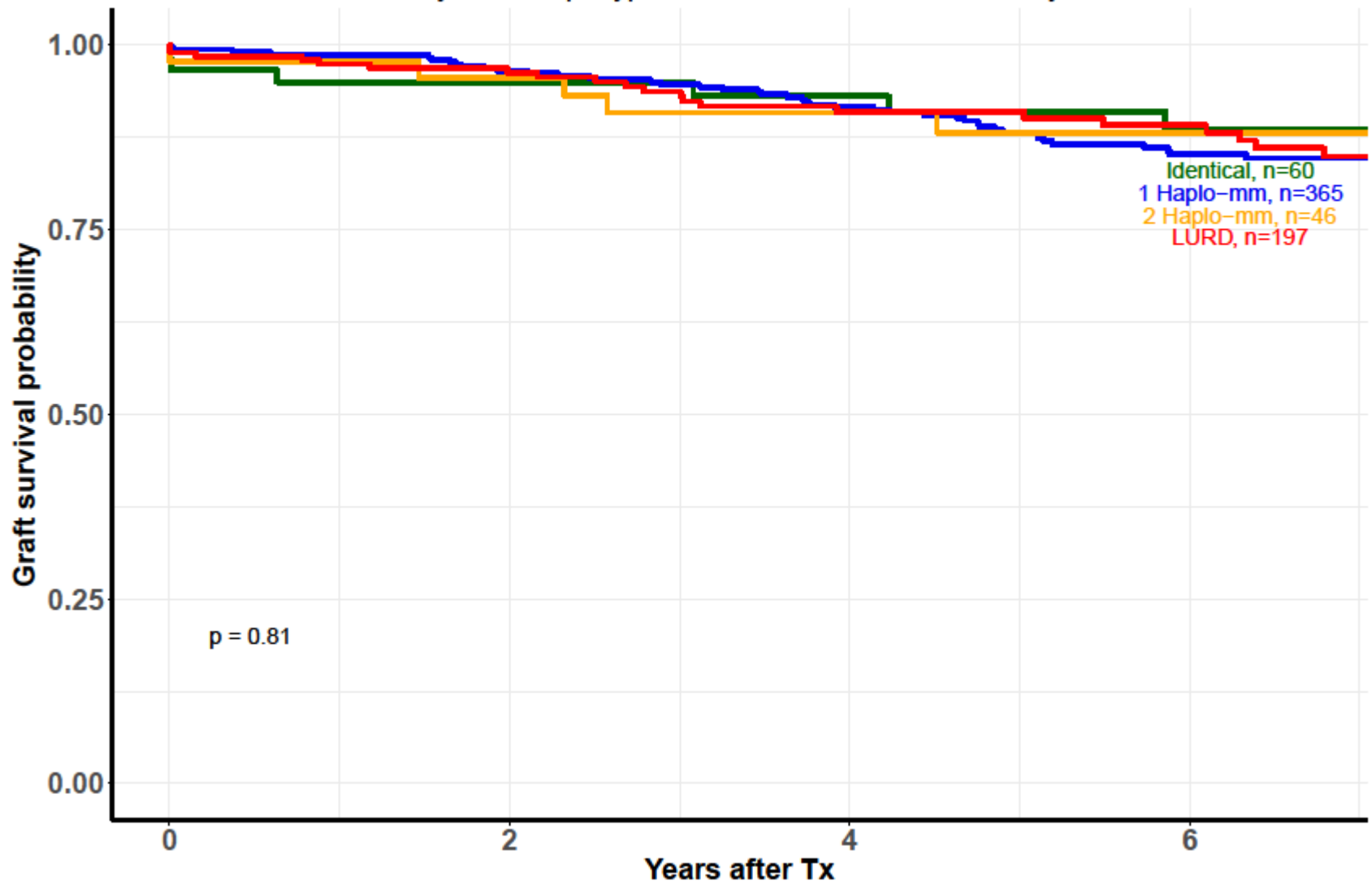
# Graft survival, first DD kidney (only) transplant

By DR-mismatch, Norway 2007-2017

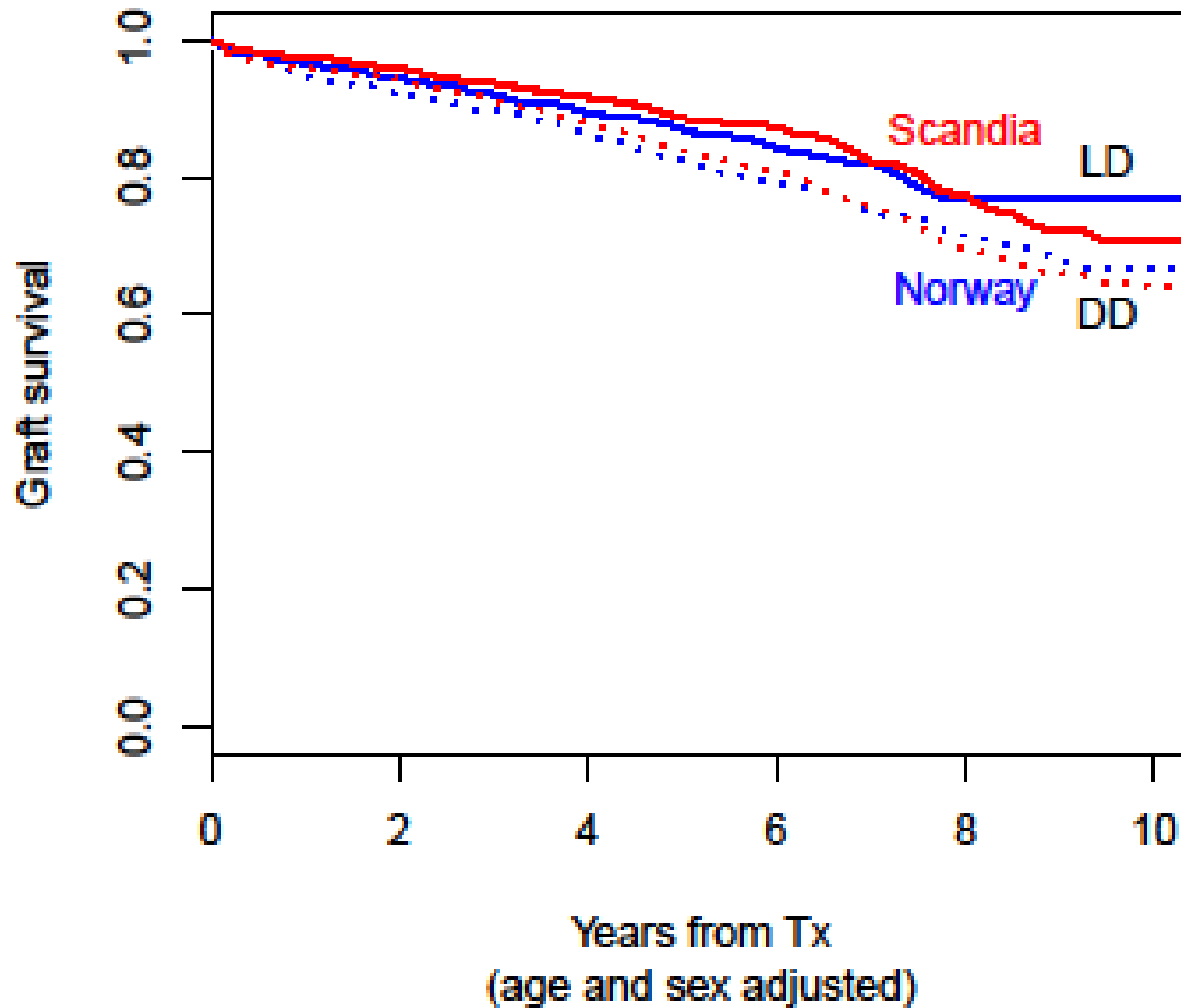


# Graft survival, first LD kidney (only) transplant

By HLA-haplotype mismatch, 2007-2017 Norway

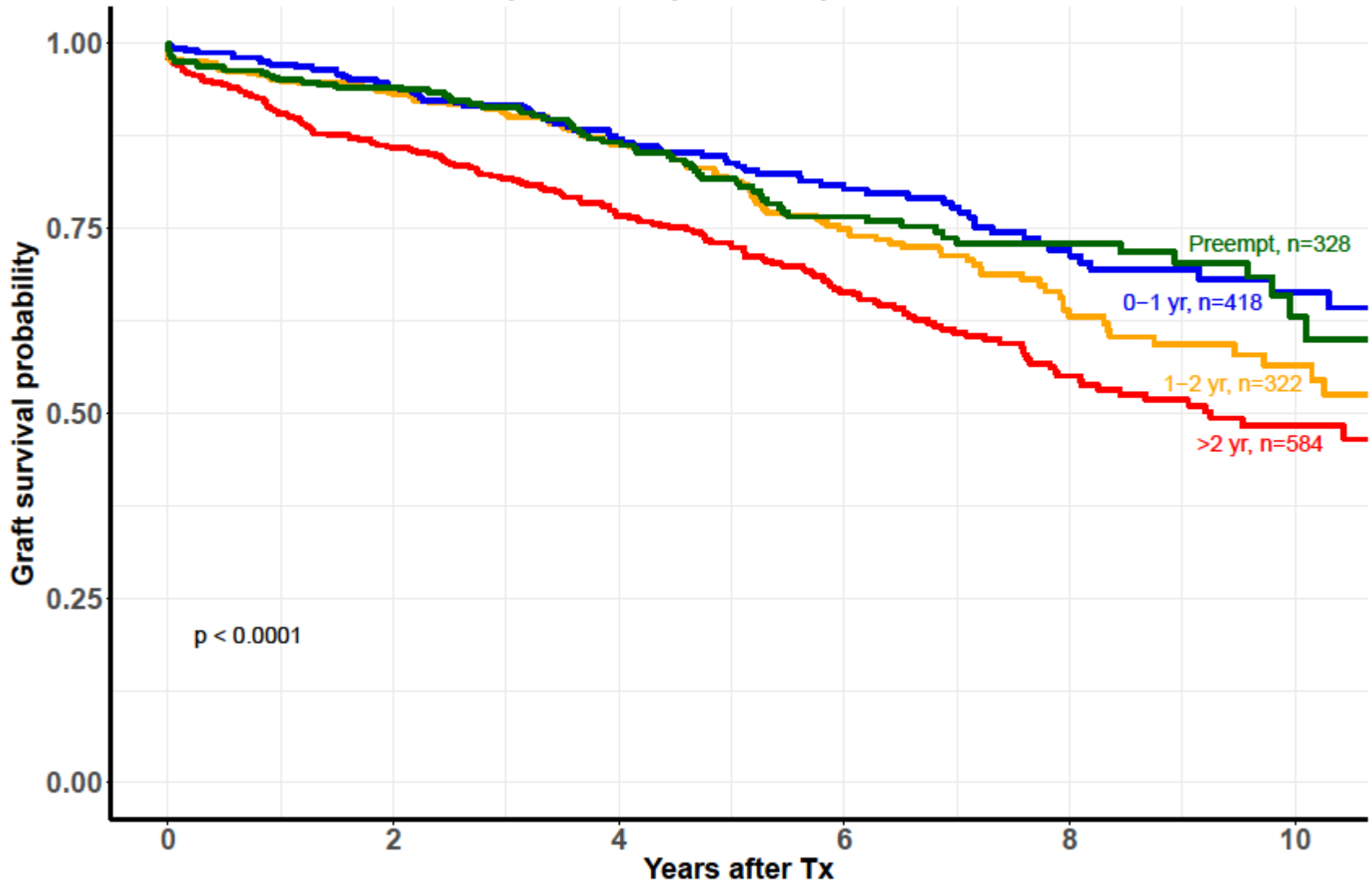


### Graft survival LD/DD 2007–2016



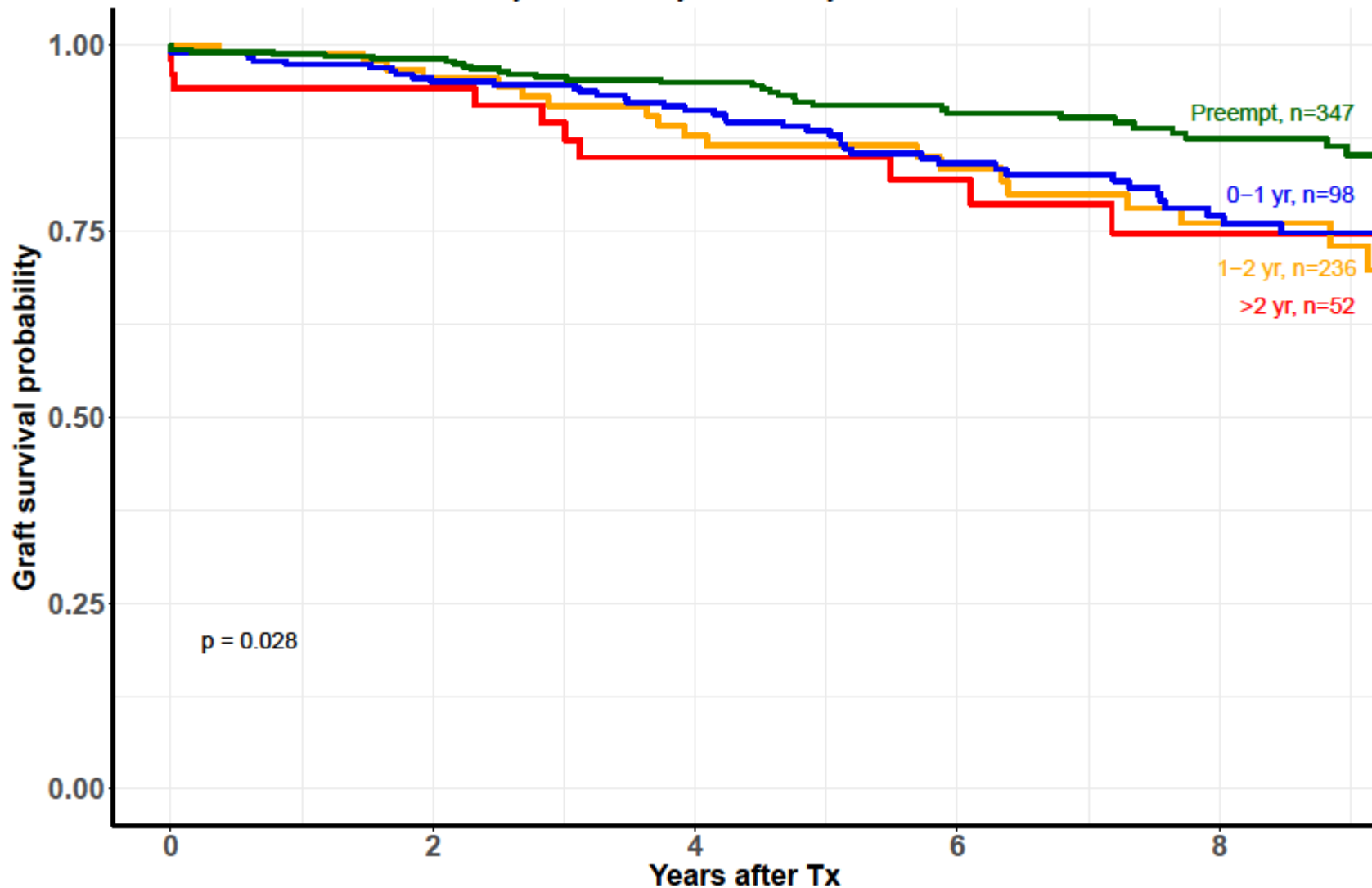
# Graft survival, first DD kidney (only) transplant

By time in dialysis, Norway 2007–2017



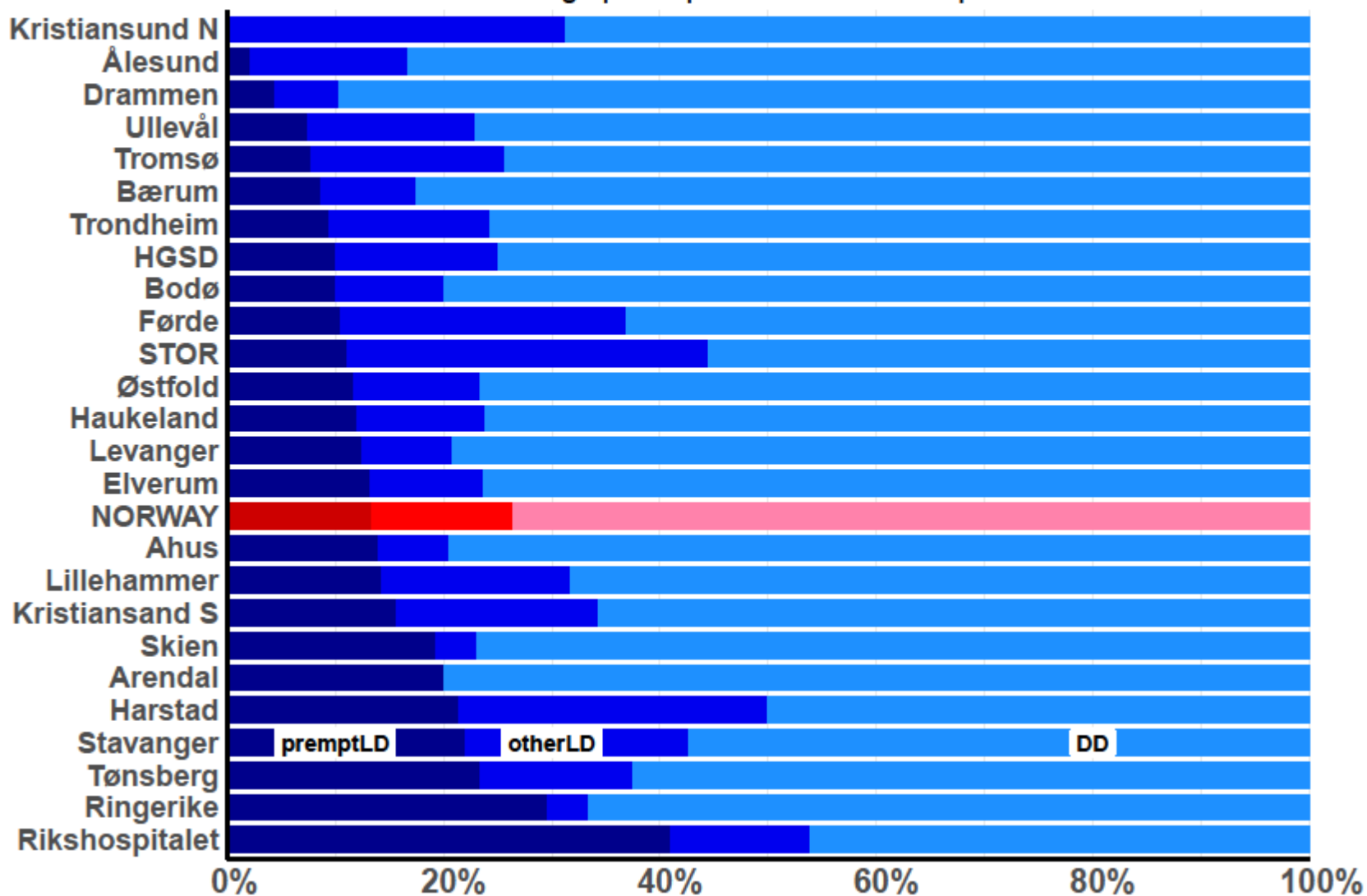
# Graft survival, first LD kidney (only) transplant

By time in dialysis, Norway 2007–2017



# Kidney (only) transplantations 2013–2017

Percentage preemptiveLD/otherLD/DD per center





## *VENTETIDER 2017*

---

### **MEDIAN (RANGE) VENTETID**

TRANSPLANTASJONER UTFØRT I 2017; SINGEL NYRE FRA AVDØD GIVER

---

Tx1 (n=147): 13 (0-62) mnd.

Blodgr. A (n=98): 11 (0-41) mnd

Blodgr. AB (n=10): 5 (0-41) mnd

PRAneg (n=158): 13 (0-48) mnd

ReTx (n=37): 14 (1-79) mnd

Blodgr. B (n=11): 14 (2-32) mnd

Blodgr. O (n=65): 25 (2-79) mnd

PRAPos (n=26): 24 (2-79) mnd

---

# Ventetid for dei som er på lista

| Antall på listen | 337        |  |
|------------------|------------|--|
| Ventet < 12 mnd  | 203 (60%)  |  |
| Ventet 12-24 mnd | 84 (25%)   |  |
| Ventet 24 mnd+   | 50(15%)    |  |
| Ventetid PRA pos | 19 (2-122) |  |
| Ventetid PRA neg | 9 (0-45)   |  |
| Ventetid blgr A  | 6 (0-122)  |  |
| Ventetid blgr B  | 11 (0-48)  |  |
| Ventetid blgr AB | 3 (3-81)   |  |
| Ventetid blgr O  | 13 (0-69)  |  |
| Ventetid organ 1 | 9 (0-69)   |  |
| Ventetid organ 2 | 10 (0-81)  |  |

# Antall pasienter på venteliste per 31. desember 2017

til sammenligning tall fra 2008 - 2016

|                     | 2008       | 2009       | 2010       | 2011       | 2012       | 2013       | 2014       | 2015       | 2016       | <b>2017</b> |
|---------------------|------------|------------|------------|------------|------------|------------|------------|------------|------------|-------------|
| Hjerte              | 4          | 11         | 11         | 16         | 13         | 17         | 18         | 17         | 14         | <b>12</b>   |
| Hjerte-Lunge        | 1          | 1          | 0          | 1          | 1          | 1          | 0          | 0          | 0          | <b>0</b>    |
| Dobbel lunge        | 27         | 49         | 39         | 36         | 43         | 52         | 47         | 56         | 44         | <b>37</b>   |
| Singel lunge        | 4          | 5          | 3          | 3          | 0          | 0          | 0          | 0          | 0          | <b>0</b>    |
| Lever               | 7          | 12         | 9          | 11         | 17         | 12         | 30         | 19         | 15         | <b>24</b>   |
| Lever-nyre          | 0          | 0          | 0          | 0          | 0          | 0          | 0          | 0          | 1          | <b>3</b>    |
| <b>Nyrer</b>        | <b>177</b> | <b>173</b> | <b>220</b> | <b>188</b> | <b>198</b> | <b>247</b> | <b>276</b> | <b>289</b> | <b>337</b> | <b>334</b>  |
| Nyre-Pancreas       | 15         | 6          | 4          | 5          | 9          | 19         | 20         | 15         | 11         | <b>6</b>    |
| Pancreas            | 2          | 0          | 0          | 3          | 8          | 12         | 19         | 14         | 17         | <b>14</b>   |
| Øy-celler           | 4          | 11         | 19         | 18         | 8          | 5          | 8          | 10         | 9          | <b>7</b>    |
| <b>Nyrer totalt</b> | <b>192</b> | <b>179</b> | <b>224</b> | <b>193</b> | <b>207</b> | <b>266</b> | <b>296</b> | <b>304</b> | <b>349</b> | <b>343</b>  |

**Per 30.9.2018: bare nyre 351, nyre totalt 356**

Kilde : Naper, IMMI OUS,RH