

Espen Nordheim

Section of Nephrology, Department of Transplant Medicine, Oslo University Hospital.

## Rejeksjonsdiagnostikk hjå pankreastransplanterte pasientar

Espen Nordheim, MD  
Resident nephrology, PhD candidate

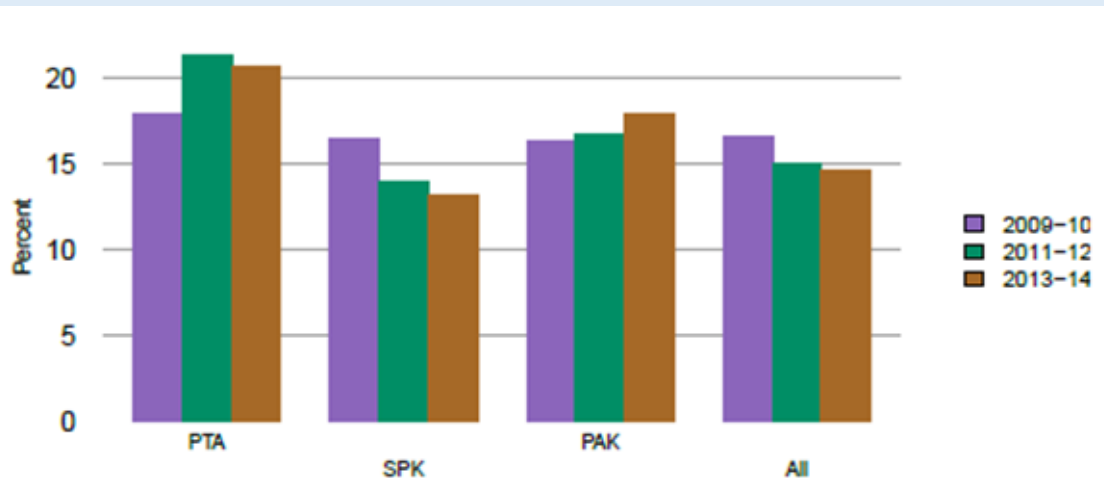
Email: [b23697@ous-hf.no](mailto:b23697@ous-hf.no)

Rejeksjonsdiagnostikk hjå pankreastransplanterte pasientar

Espen Nordheim

Section of Nephrology, Department of Transplant Medicine Oslo University Hospital.

## Incidence of acute rejections within 1 year post transplant



Kandaswamy R et al: 2017 OPTN/SRTR 2015 Annual Data Report Pancreas Am J Transpl

## Rejeksjonsdiagnostikk hjå pankreastransplanterte pasientar

Espen Nordheim

Section of Nephrology, Department of Transplant Medicine Oslo University Hospital.

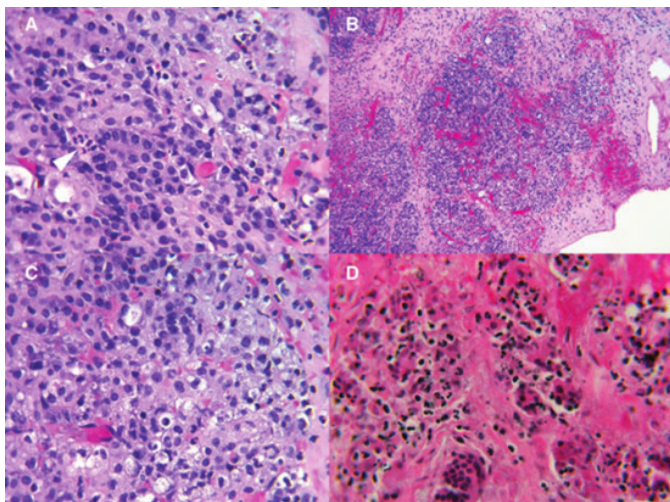
Variable	PTA <sub>DD</sub> (n = 55)	SPK <sub>DD</sub> (n = 62)
<u>Causes of pancreas graft loss</u>		
Total pancreas graft losses, n (%)	17 (31%)	9 (15%)
Graft vein thrombosis	5 (9%)	4 (6%)
Rejection	11 (20%)	2 (3%)
Infection	0 (0%)	2 (3%)
Death	1 (2%)	1 (2%)

<sup>1</sup> Lindahl/Horneland et al AJT 17

## Rejeksjonsdiagnostikk hjå pankreastranplanterte pasientar

Espen Nordheim

Section of Nephrology, Department of Transplant Medicine, Oslo University Hospital.



American Journal of Transplantation 2017; 17: 28–41  
Wiley Periodicals Inc.

© 2016 The Authors. American Journal of Transplantation published by  
Wiley Periodicals, Inc. on behalf of American Society of  
Transplant Surgeons

Meeting Report

doi: 10.1111/ajt.14107

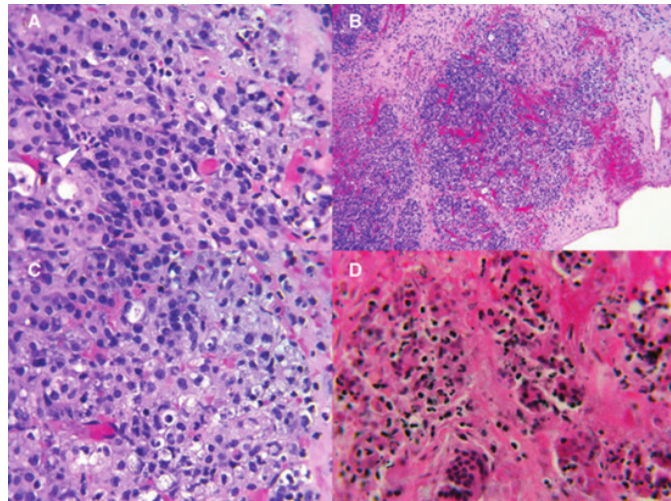
### The Banff 2015 Kidney Meeting Report: Current Challenges in Rejection Classification and Prospects for Adopting Molecular Pathology

A. Loupy<sup>1,\*†</sup>, M. Haas<sup>2,†</sup>, K. Solez<sup>3</sup>, L. Racusen<sup>4</sup>,  
D. Glotz<sup>5</sup>, D. Seron<sup>6</sup>, B. J. Nankivell<sup>7</sup>,  
R. B. Colvin<sup>8</sup>, M. Afrouzian<sup>9</sup>, E. Akalin<sup>10</sup>,  
N. Alachkar<sup>11</sup>, S. Bagnasco<sup>4</sup>, J. U. Becker<sup>12</sup>,  
L. Cornell<sup>13</sup>, C. Drachenberg<sup>14</sup>, D. Dragun<sup>15</sup>,  
H. de Kort<sup>16</sup>, I. W. Gibson<sup>17</sup>, E. S. Kraus<sup>11</sup>,  
C. Lefaucheur<sup>5</sup>, C. Legendre<sup>1</sup>, H. Liapis<sup>18</sup>,  
T. Muthukumar<sup>19</sup>, V. Nickeleit<sup>20</sup>, B. Orandi<sup>11</sup>,  
W. Park<sup>13</sup>, M. Rabant<sup>1</sup>, P. Randhawa<sup>21</sup>,  
E. F. Reed<sup>22</sup>, C. Roufosse<sup>23</sup>, S. V. Seshan<sup>24</sup>,  
B. Sis<sup>3</sup>, H. K. Singh<sup>20</sup>, C. Schinstock<sup>25</sup>,  
A. Tambur<sup>26</sup>, A. Zeevi<sup>27</sup> and M. Menzel<sup>3</sup>

## Rejeksjonsdiagnostikk hjå pankreastranplanterte pasientar

Espen Nordheim

Section of Nephrology, Department of Transplant Medicine, Oslo University Hospital.



### BIOPSIMODALITETER

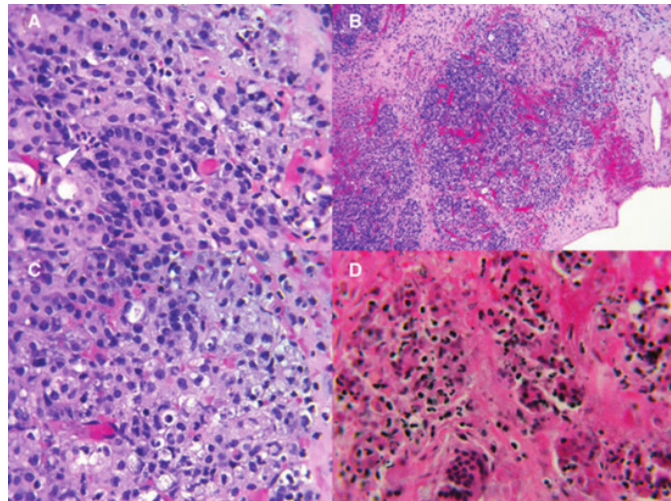
Perkutan ultralydveileda  
Laparoskopisk  
Ved open laparotomi

Cystoskopisk  
Endoskopisk

## Rejeksjonsdiagnostikk hjå pankreastranplanterte pasientar

Espen Nordheim

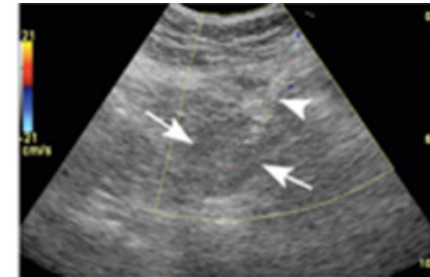
Section of Nephrology, Department of Transplant Medicine, Oslo University Hospital.



### BIOPSIMODALITETER

Perkutan ultralydveileda  
Laparoskopisk  
Ved open laparotomi

Cystoskopisk  
Endoskopisk



## Rejeksjonsdiagnostikk hjå pankreastranplanterte pasientar

Espen Nordheim

Section of Nephrology, Department of Transplant Medicine, Oslo University Hospital.

### Komplikasjonsfare ved perkutan ultralydveiledda biopsi

- blødning 1%
- perforasjon
- fistulering

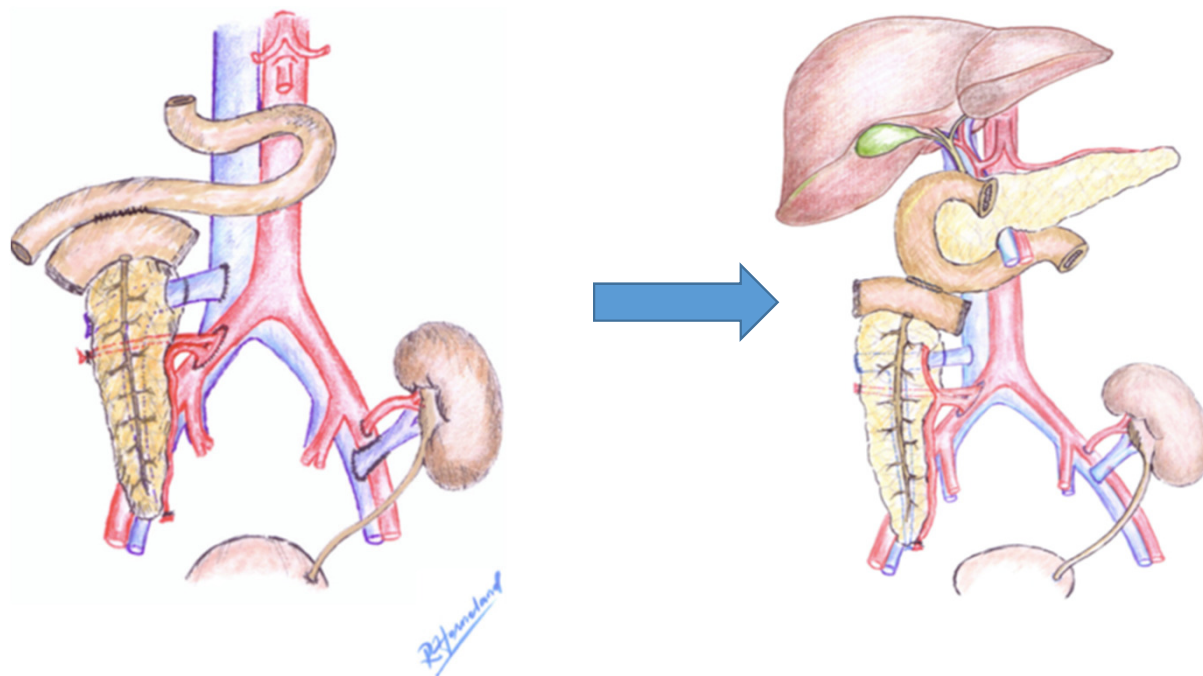




Reaksjonsdiagnostikk hjå pankreastransplanterte pasientar

Espen Nordheim

Section of Nephrology, Department of Transplant Medicine Oslo University Hospital.



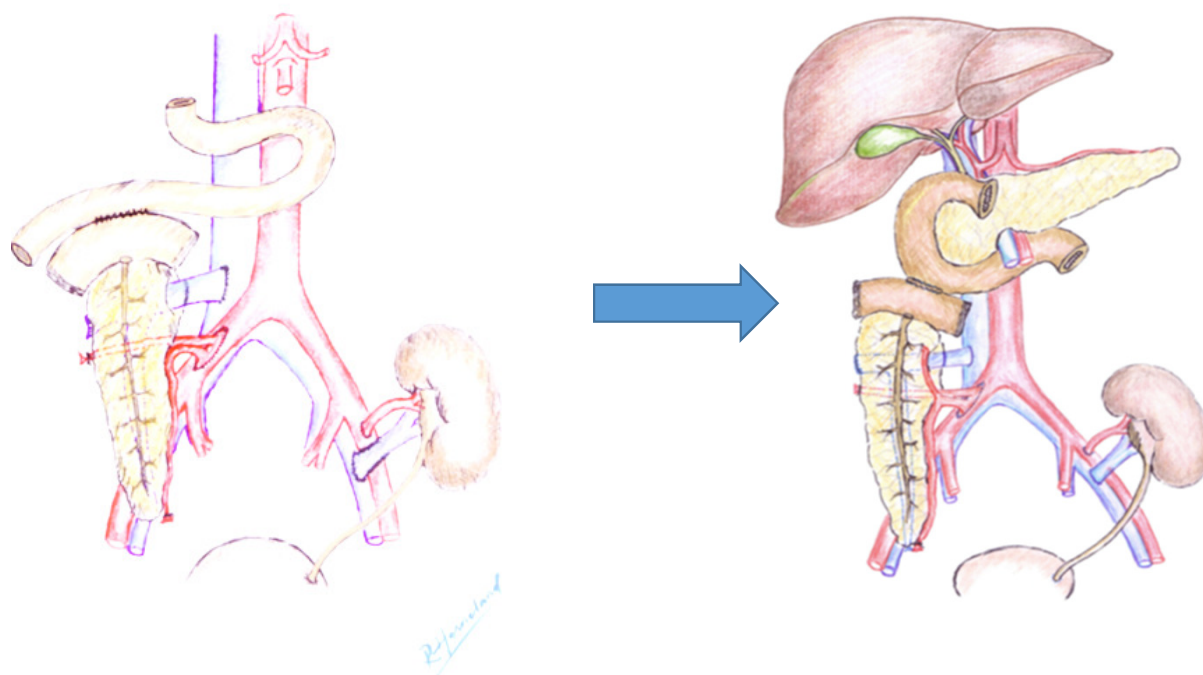
Adopted from R. Horneland AJT 15



Resultat endoskopisk ultralydveileda biopsiprosedyre

Espen Nordheim

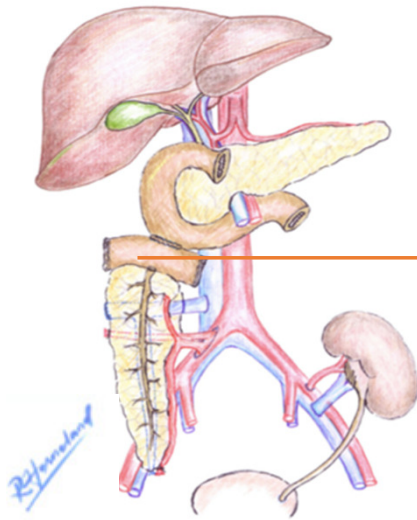
Section of Nephrology, Department of Transplant Medicine, Oslo University Hospital.



Endoskopisk tilgong

Endoskopisk ultralydveileda (EUS) biopsitaking

Adopted from R. Horneland AJT 15



Kva med donors duodenum?

Enklare tilgong  
- kan denne brukast som rejeksjonsmarkør?

## Konkordans i biopsiar frå donor duodenum og pankreas transplantat

Espen Nordheim

Section of Nephrology, Department of Transplant Medicine Oslo University Hospital.

- 1 Samsvarande histologiske funn i donor duodenum og pankreas transplantat?
- 2 Kan biopsiar frå donor duodenum brukast til å utelukke reaksjon i pankreas transplantatet?

Konkordans i biopsiar frå donor duodenum og pankreas transplantat

Espen Nordheim

Section of Nephrology, Department of Transplant Medicine Oslo University Hospital.

## Resultat

September 2012- november 2016

212 Endoskopisk ultralydveila (EUS) prosedyrer

113 biopsisett med representativt vev samstundes frå donor duodenum og pankreas transplantat

Konkordans i biopsiar frå donor duodenum og pankreas transplantat

Espen Nordheim

Section of Nephrology, Department of Transplant Medicine Oslo University Hospital.

## Resultat

September 2012- november 2016

113 biopsisett

22 rejeksjon i pankreas

2 samstundes funn av rejeksjon i donor duodenum

Konkordans biopsiar frå donor duodenum og pankreas transplantat

Espen Nordheim

Section of Nephrology, Department of Transplant Medicine Oslo University Hospital.

## Resultat

September 2012- november 2016

113 biopsisett

- 6    rejeksjon donor duodenum
- 2    samstundes funn av rejeksjon i pankreas

Konkordans i biopsiar frå donor duodenum og pankreas transplantat

Espen Nordheim

Section of Nephrology, Department of Transplant Medicine Oslo University Hospital.

## Resultat

September 2012- november 2016

113 biopsisett

95 normal donor duodenalfunn

13 samstundes reaksjon i pankreas



Konkordans i biopsiar frå donor duodenum og pankreas transplantat

Espen Nordheim

Section of Nephrology, Department of Transplant Medicine Oslo University Hospital.

## Konklusjon

EUS verkar til å vera ein trygg og effektiv modalitet for biopsitaking av pankreas transplantat  
- med trening og erfaring

Det er lite samsvar mellom histologiske funn i donor duodenum og pankreas transplantat

Biopsiar frå donor duodenum er lite egna til å utelukke reaksjon i pankreas transplantatet

# Rejeksjonsdiagnostikk hjå pankreastransplanterte pasientar

Espen Nordheim

Section of Nephrology, Department of Transplant Medicine, Oslo University Hospital.

Received: 16 October 2017 | Revised: 6 December 2017 | Accepted: 3 January 2018

DOI: 10.1111/ajt.14658

**BRIEF COMMUNICATION**

AJT

## **Pancreas transplant rejection episodes are not revealed by biopsies of the donor duodenum in a prospective study with paired biopsies**

E. Nordheim<sup>1,2</sup> | R. Horneland<sup>3</sup> | E. M. Aandahl<sup>3,4</sup> | K. Grzyb<sup>5</sup> | L. Aabakken<sup>6</sup> | V. Paulsen<sup>6</sup> | K. Midtvedt<sup>1</sup> | A. Hartmann<sup>1,2</sup> | T. Jenssen<sup>1,7</sup>

Espen Nordheim, MD  
Email: b23697@ous-hf.no